

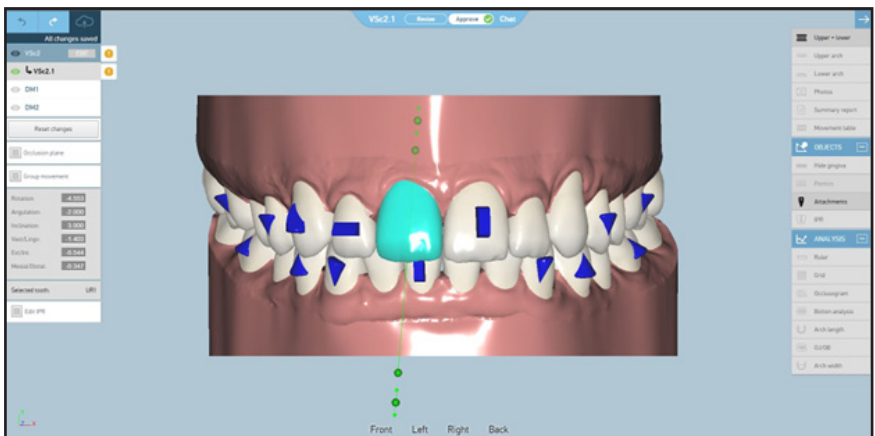
- » Open your virtual setup via the Smart Moves Complete portal.
- » Click the edit button next to the virtual setup that you want to modify.



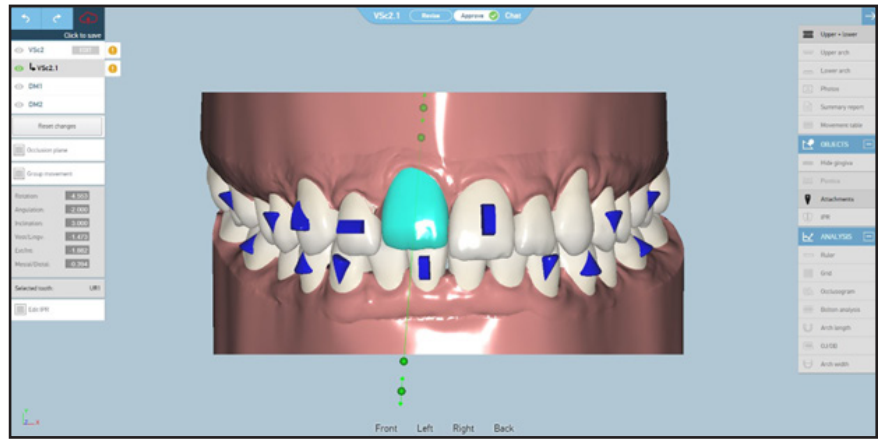
- » Once you click the edit button, a sub setup will appear below the current setup. You will now be able to edit this version (VSc2.1). The aligner total/progress bar will disappear in edit mode as the aligner total will likely be adjusted based upon the changes made to the current setup.



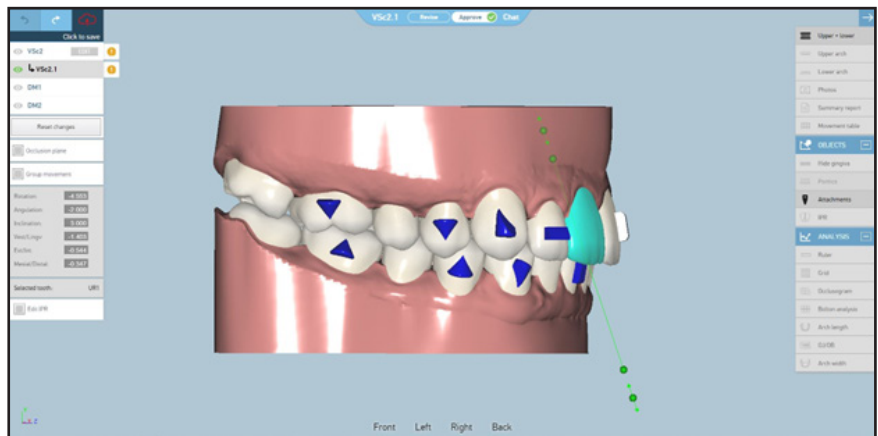
- » To edit a tooth, left click on it and the tooth will become a light blue color to show that it is selected. Use the green "handlebars" to adjust the tooth position based upon the specific view. From a facial view, you can adjust the intrusion/extrusion and angulation of the teeth. Click and drag on the little green circles to make these changes.



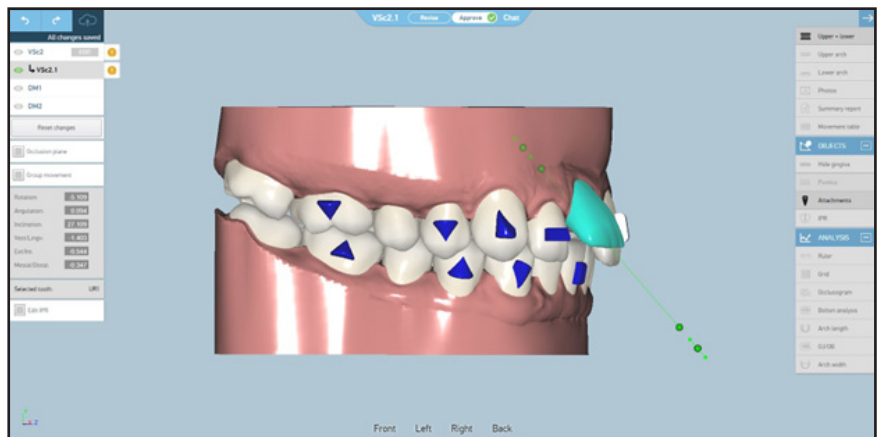
- In this example, you can see that the selected tooth has been dramatically intruded, using the green handlebar tool.



- From a side view, you can still adjust the intrusion and extrusion. You can also adjust the inclination of a tooth when viewing it from the side by using the green handlebar tool.

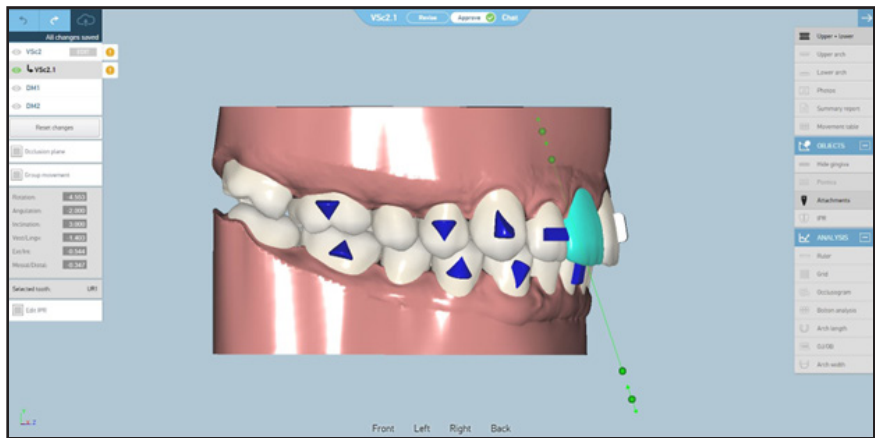


- Here is an example of the inclination of the highlighted tooth. PLEASE NOTE: All edits made to the virtual setup will need to be reviewed and approved by a Smart Moves Complete technician before a final approval of the case by the doctor.

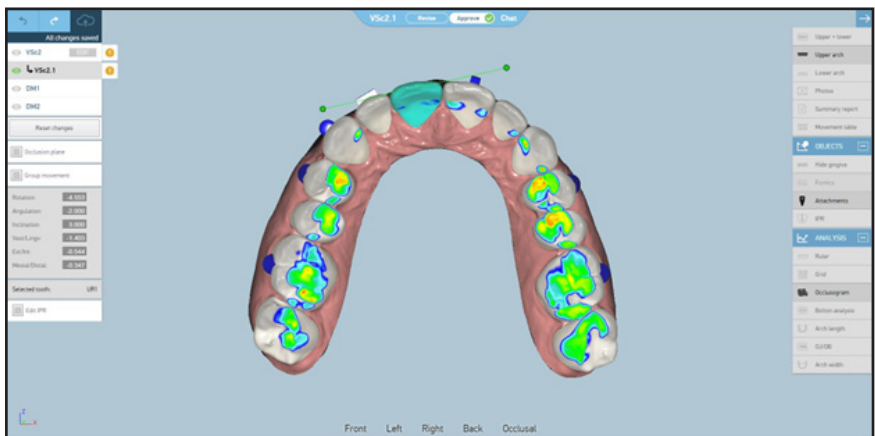


- » In order to undo a change made to the virtual setup, please click the back arrow in the upper left corner. Conversely, the arrow to the right will redo the same changes.

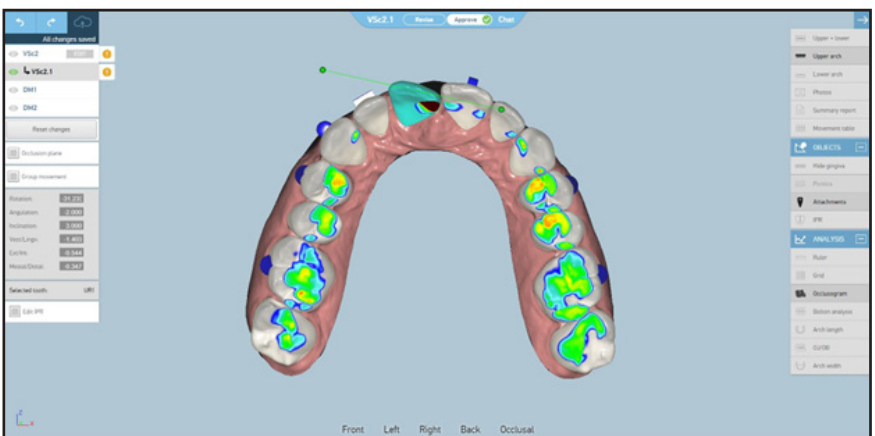
You may also fully reset all of the edits made to the virtual setup by clicking the Reset changes button.



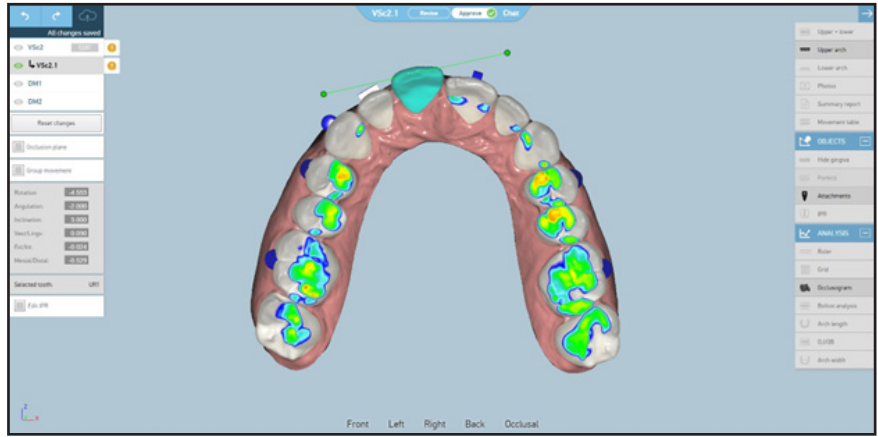
- » At any time, you can turn on/off the occlusogram feature to the right side of the screen to see how the contacts between the teeth will change as you adjust their positioning. The light greens and blues represent lighter/normal contacts. The orange and red areas represent heavier contacts/collisions.



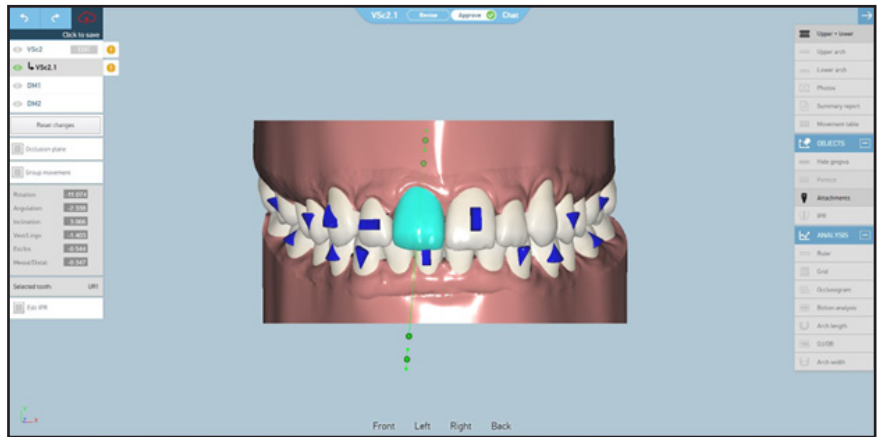
- » From an occlusal view, you can use the green handlebar tool to adjust the rotation on a tooth. This example shows an extreme rotation and the dark red, heavy contact created by rotating the selected tooth.



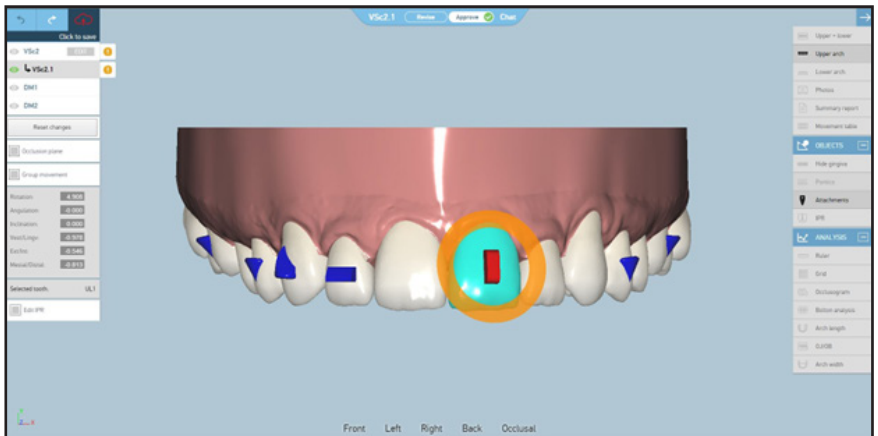
- You can also bodily move a tooth by left clicking and moving the tooth to the desired position. Remember that you can use the Undo arrow to revert the tooth to a previous position.



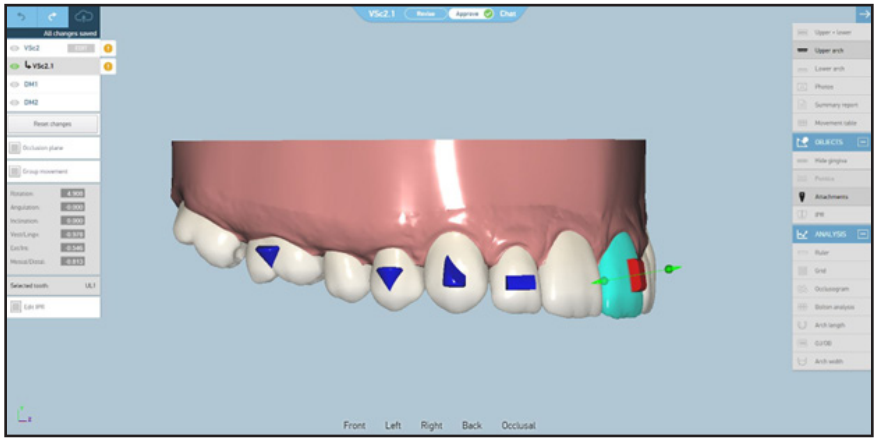
- After making edits to the virtual setup, click the “Click to save” red cloud in the upper left corner. Remember that you can always choose “Reset changes”, but this will undo all edits that you have made to the virtual setup.



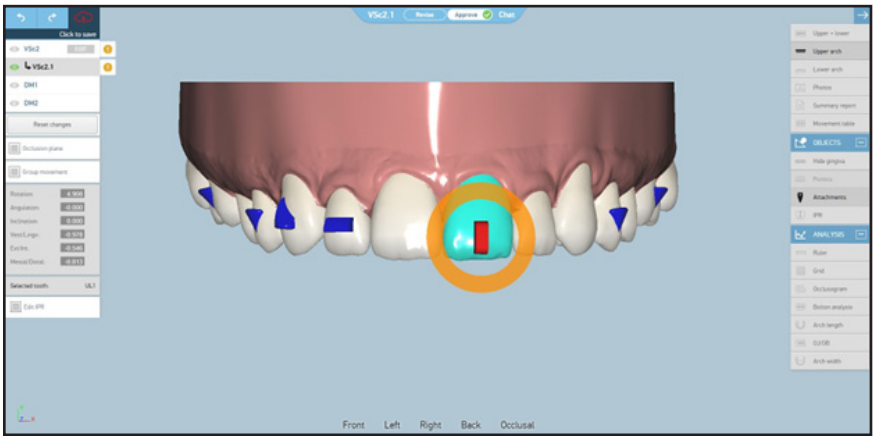
- Attachment positioning can also be adjusted (note: all final positions must be approved by the Smart Moves Complete technician). From a facial view, you can click and drag on the orange circle in order to change the rotation of an attachment.



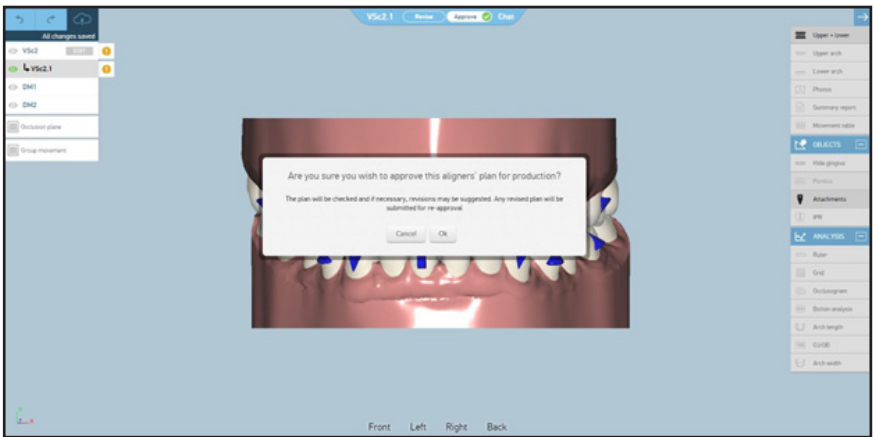
» From a side view, you can use the green handlebar tool to change the profile of the attachment, for a more protrusive or a more shallow attachment.



» By left clicking and dragging the attachment, you can also change the overall position of the attachment on the tooth. In this case, the attachment position was moved to the incisal edge of the tooth as an example.



» Once you are satisfied with the changes that you have made to the virtual setup, click Approve at the top of the screen. Another window will pop up asking if you are satisfied with the changes you have made. If so, please click OK. Otherwise, click Cancel to return to the setup for further editing. If you click OK, the setup will then go back to the technicians for final review and a new setup will be posted for your review (often with a change to the aligner total).



**smart
moves.**
complete
the smarter way to a beautiful smile™